

## Wolcott's Demographics

### Population

In 2000, Wolcott's population of 15,215 comprised 4 percent of the NVC region. Wolcott's population, the ninth largest in the NVC, grew by 11 percent from 1990 to 2000. The population in the NVC increased by 4.6 percent from 1990 to 2000. Connecticut's population grew by 3.6 percent during the 1990 to 2000 period.

### Population by Age

In 1990, adults from the ages of 25 to 44 made up 32 percent of Wolcott's population and one-third of the population in the NVC and the state. In the same year, people under the age of 18 constituted 23 percent of the population in Wolcott, the NVC, and the state. Also in 1990, people from the ages of 45 to 64 comprised 22 percent of Wolcott's population, 19 percent of the NVC's population, and 20 percent of Connecticut's population. The population over 65 constituted 12 percent of Wolcott's population, 15 percent of the population in the NVC, and 14 percent of the state's population in 1990. The percentage of the population between 18 and 24 was 10 percent in Wolcott and the NVC and 11 percent in Connecticut in 1990.

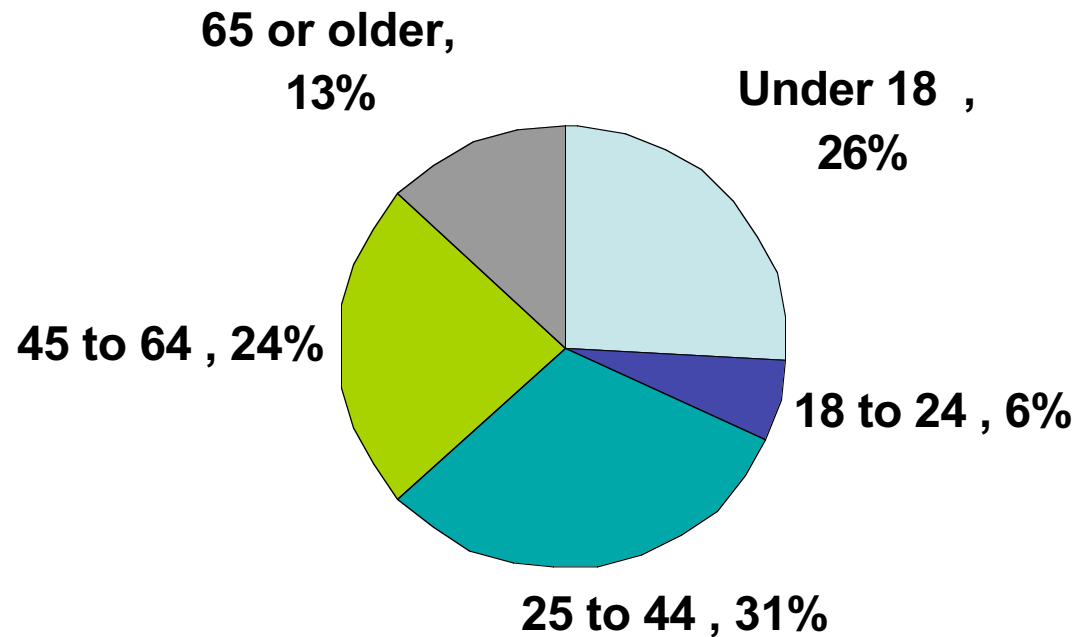
In 2000, adults from the ages of 25 to 44 made up 31 percent of the population in Wolcott and 30 percent of the population in the NVC and the state. In the same year, people under the age of 18 constituted 25 percent of the population in the NVC and the state and 26 percent of Wolcott's population. Also in 2000, people between the ages of 45 to 64 made up 24 percent of Wolcott's population and 23 percent of the population in the NVC and Connecticut. The population over 65 comprised 13 percent of Wolcott's population, 15 percent of the population in the NVC, and 14 percent of the state's population in 2000. The percentage of the population between 18 and 24 was 6 percent in Wolcott, 7 percent in the NVC, and 8 percent in Connecticut in 2000.

Wolcott ranked fourth for the percentage of residents under 18. It possessed the eighth highest percentage of residents between 25 and 44. Wolcott ranked tenth out of 17 for residents between the ages of 45 to 64 and citizens older than 65 in the NVC in 2000. It possessed sixth *smallest* percentage of residents between 18 and 24 in the NVC in 2000.

### Racial and Ethnic Populations

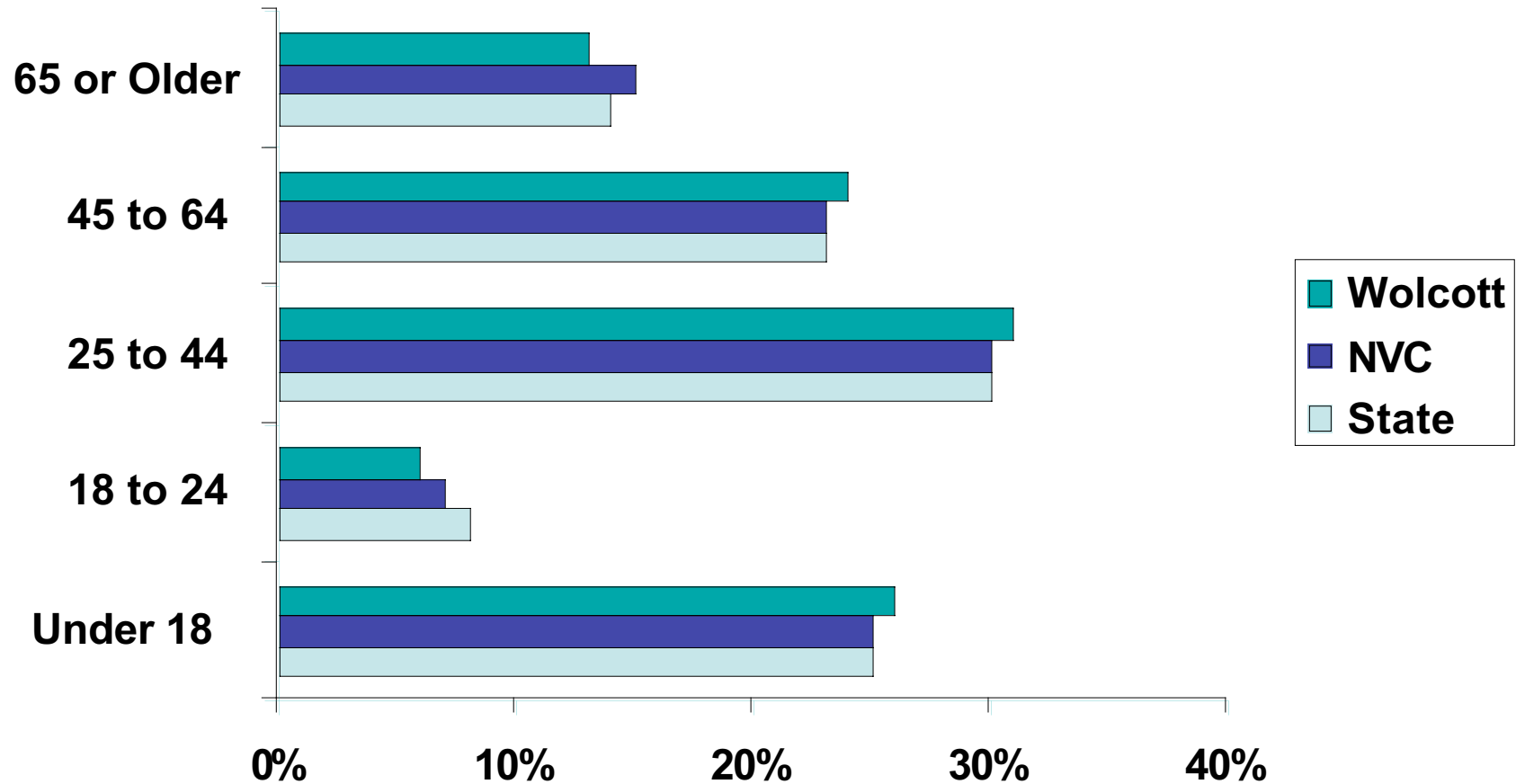
In 2000, African Americans constituted slightly more than 1 percent of Wolcott's population whereas they comprise 6.5 percent of the NVC and 9.1 percent of the state's population. In 2000, Latinos made up 1.8 percent of Wolcott's population, 9 percent of the NVC's citizenry, and 9 percent of the population in the state. Non-white residents comprised slightly less than 4 percent of Wolcott's population, 14.3 percent of the NVC's citizenry, and 18.4 percent of the population in Connecticut. Whites comprised 96 percent of Wolcott's population, 86 percent of the NVC's population, and 82 percent of the population in Connecticut.

# Distribution of Age Cohorts for Wolcott, 2000



Source: 2000 Census

# Age Cohorts for Wolcott, 2000



Source: 2000 Census

It possessed the sixth smallest percentage of Latino residents in the NVC in 2000. Wolcott also had the eighth highest percentage of non-white residents in the NVC in 2000.

During the period from 1990 to 2000, the percentage of African Americans in the population *decreased* by 12 percent in Wolcott (from 215 to 189) whereas it grew by 23.3 percent in the NVC and 13 percent in Connecticut. Bethlehem, Beacon Falls, Prospect, Southbury, and Wolcott were the only NVC towns to experience a loss in their African American populations from 1990 to 2000.

The Latino population significantly increased in Wolcott, the NVC, and Connecticut in the last ten years. The Latino population expanded by 91 percent in Wolcott (from 143 to 273), 64 percent in the NVC, and 50 percent in Connecticut from 1990 to 2000. Wolcott experienced the fourth largest percent growth in Latino population in the NVC during the last ten years. The Latino population grew rapidly in Wolcott over the last ten years. Whereas Latinos still constitute approximately 8 percent of the town's population, the increasing presence of this ethnic community will significantly influence policy and economics in this town. Latinos will compete for jobs with other groups; the city schools and businesses must be prepared to educate and employ students and workers with limited proficiency in English.

### **Educational Attainment in Wolcott**

The following categories measure the highest degree achieved by a person. For example, the figure that 18 percent of the citizens in Connecticut graduated from college means that a bachelor's degree is the highest level of education attained by 18 percent of Connecticut residents.

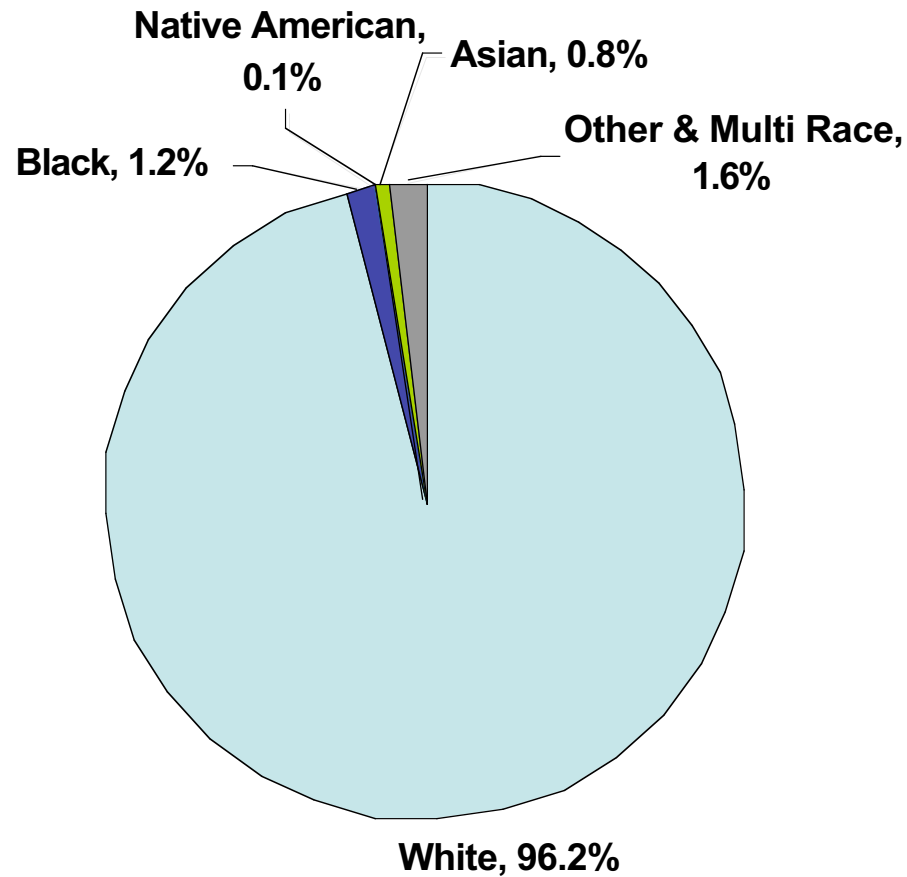
In 2000, 12 percent of people in Wolcott over the age of 25 had earned a college degree as their highest form of education whereas 15 percent of the residents in the NVC and 18 percent of citizens in the state graduated from college and did not pursue their education beyond this level.

In the same year, 31 percent of Wolcott's population over the age of 25 attended college for a period of time without receiving a bachelor's degree and 26 percent of the citizens in the NVC and 24 percent of Connecticut residents went to college without obtaining a degree.

In 2000, 13 percent of residents in Connecticut held a professional degree, 10 percent of the NVC's citizens possessed a professional degree, and 7 percent of Wolcott's residents had a professional degree.

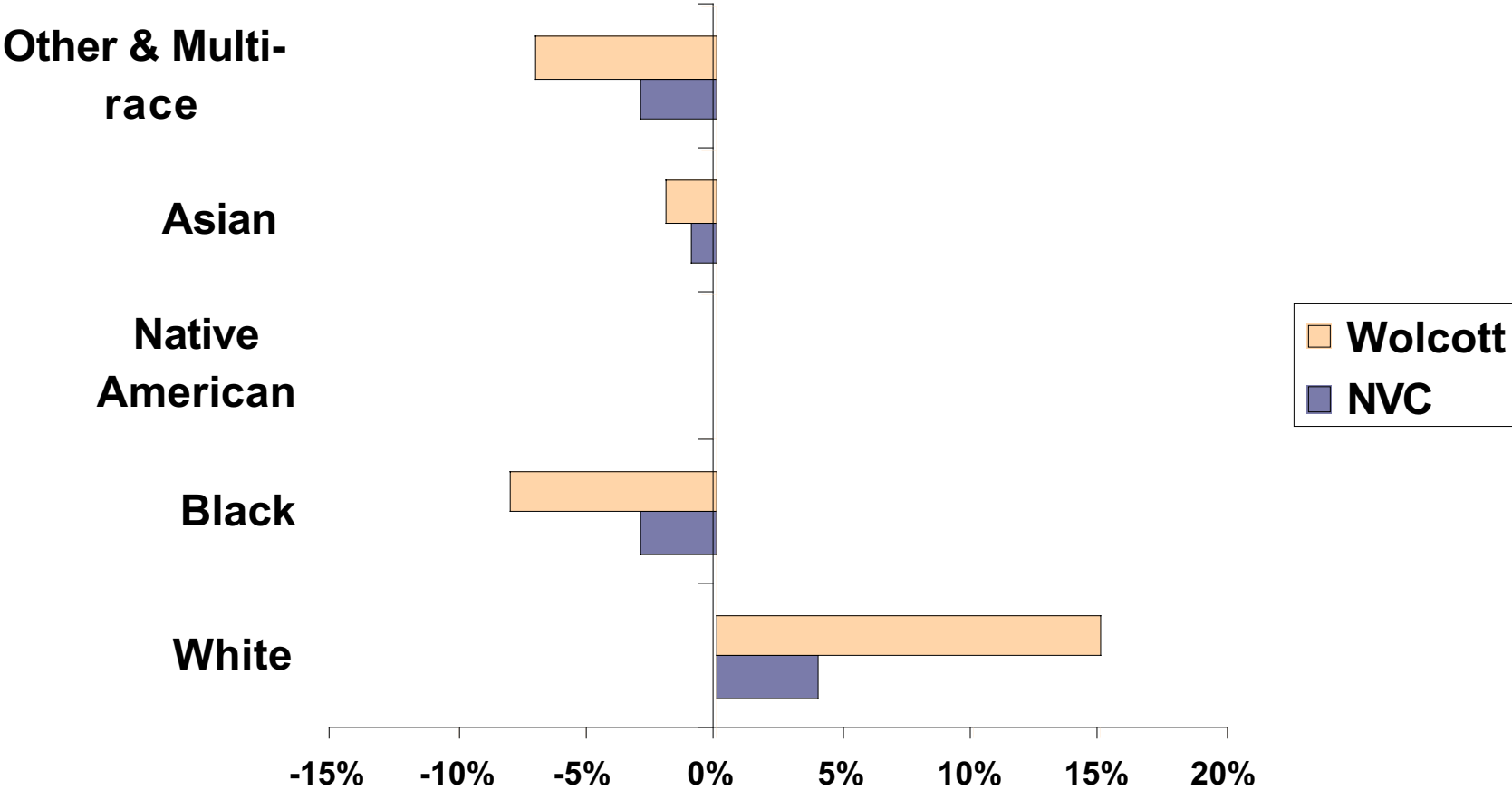
Less than 40 percent of Wolcott's residents did not pursue any further education after receiving a high school diploma. By contrast, 31 percent of NVC residents and 29 percent of the citizens in Connecticut did not attend school after they received their high school diplomas.

# Distribution of Race for Wolcott, 2000



Source: 2000 Census

# Percentage Point Difference in Race Cohorts from Connecticut for Wolcott, 2000



Source: 2000 Census

In Wolcott, 12 percent of the residents failed to receive a graduate equivalency diploma (GED) whereas 18 percent of NVC residents and 16 percent of Connecticut's citizens did not receive a GED as their highest degree of formal education.

*The following statistics examine the percentage of residents who graduated from college.*

Within the NVC, Wolcott has the sixth lowest percentage of residents over the age of 25 who received *at least* a college degree. It ranks behind the state and the NVC for percentage of residents over 25 who received a college degree. Waterbury possesses the lowest percentage of citizens who *at least* received a college degree in the NVC. Cheshire has the highest percentage of college graduates among NVC towns.

The percentage of residents who possessed *at least* a college degree increased by approximately 40 percent in Wolcott during the period from 1990 to 2000. Wolcott experienced the fourth greatest percent gain in college graduates among NVC towns during this period. It ranks ahead of the NVC and the state for percent increase in residents with a college degree. The percentage of college graduates *decreased* in Waterbury over the last ten years whereas the percentage of college graduates grew by nearly 70 percent in Bethlehem.

### **Poverty in Wolcott**

In 1999, 2.6 percent of Wolcott's population lived below the poverty line. In the same year, 7.9 percent of Connecticut's residents and 7.7 percent of the people within the NVC lived in poverty. Wolcott possessed the fourth smallest percentage of people in poverty within the NVC in 1999. Prospect and Oxford had the smallest percentage of residents living in poverty in the NVC in 1999. Waterbury and Derby had the highest percentage of residents living in poverty in the NVC in 1999.

In total, 392 of Wolcott's residents live in poverty. Wolcott possessed the seventh smallest number of residents living in poverty in the NVC in 1999. Bethlehem and Prospect tied for the lowest number of people living in poverty among NVC cities and towns in 1999. Waterbury and Naugatuck possessed the highest number of residents living in poverty within the NVC in 1999.

### **Increases in Poverty in Wolcott, 1989-1999**

The population living in poverty in Wolcott increased by 60 percent (from 245 to 392) from 1989 to 1999. Over the same period, the poverty population increased by 30 percent in the NVC and 19 percent in the state. Wolcott experienced the fourth greatest percent increase in people living in poverty within the NVC from 1989 to 1999. Beacon Falls, Southbury, and Thomaston possessed the highest percent increases in poverty population in the NVC from 1989 to 1999. During this ten-year period, five NVC towns (Bethlehem, Prospect, Watertown, Middlebury, Seymour) experienced a decrease in the number of residents living in poverty.

Wolcott's poverty population increased by 147 residents from 1989 to 1999. Wolcott experienced the eighth largest increase in the number of residents living in poverty within the NVC towns from 1989 to 1999. Within the NVC, Waterbury and Naugatuck's poverty populations grew by the largest number of people whereas Watertown and Seymour's poverty populations decreased by the largest number of residents from 1989 to 1999.

### **Income in Wolcott**

People in Wolcott earn more than those in the state.<sup>1</sup> The median household in Wolcott in 1999 was \$61,376, which was more than the median household income in Connecticut (\$53,935). In 1999, Wolcott had the ninth highest median household income in the NVC. Median family income was lowest in Waterbury (\$34,285) and highest in Cheshire (\$80,466) within the NVC in 1999.

Over time, the median income of households in Wolcott increased at a slower rate than the increase in median household income in Connecticut. The median household income increased by 27 percent in Wolcott from 1989 to 1999 whereas it increased by 29 percent in Connecticut. Wolcott experienced the third smallest percent increase in median household income in the NVC from 1989 to 1999. Waterbury had the lowest percent increase in median household income (12%) and Bethlehem experienced the highest percent increase (43%).

The annual average increase in median household income grew at a slower pace in Wolcott than in Connecticut. The annual average growth rate in median household income was 2.38 percent in Wolcott and 2.60 percent in Connecticut. Wolcott had the third smallest annual average increase in median household income in the NVC from 1989 to 1999. Waterbury had the lowest average annual increase (1.17%) whereas Bethlehem experienced the highest average annual increase in median household income (3.63%).

The median household income increased by \$12,869 in Wolcott from 1989 to 1999 whereas it increased by \$12,214 in the state during this ten-year period. Wolcott had the sixth lowest increase in median household income in the NVC from 1989 to 1999. Waterbury's median household income increased by the fewest dollars (\$3,752) whereas Oxford experienced the largest absolute increase in median household income (\$22,678) among NVC towns from 1989 to 1999.

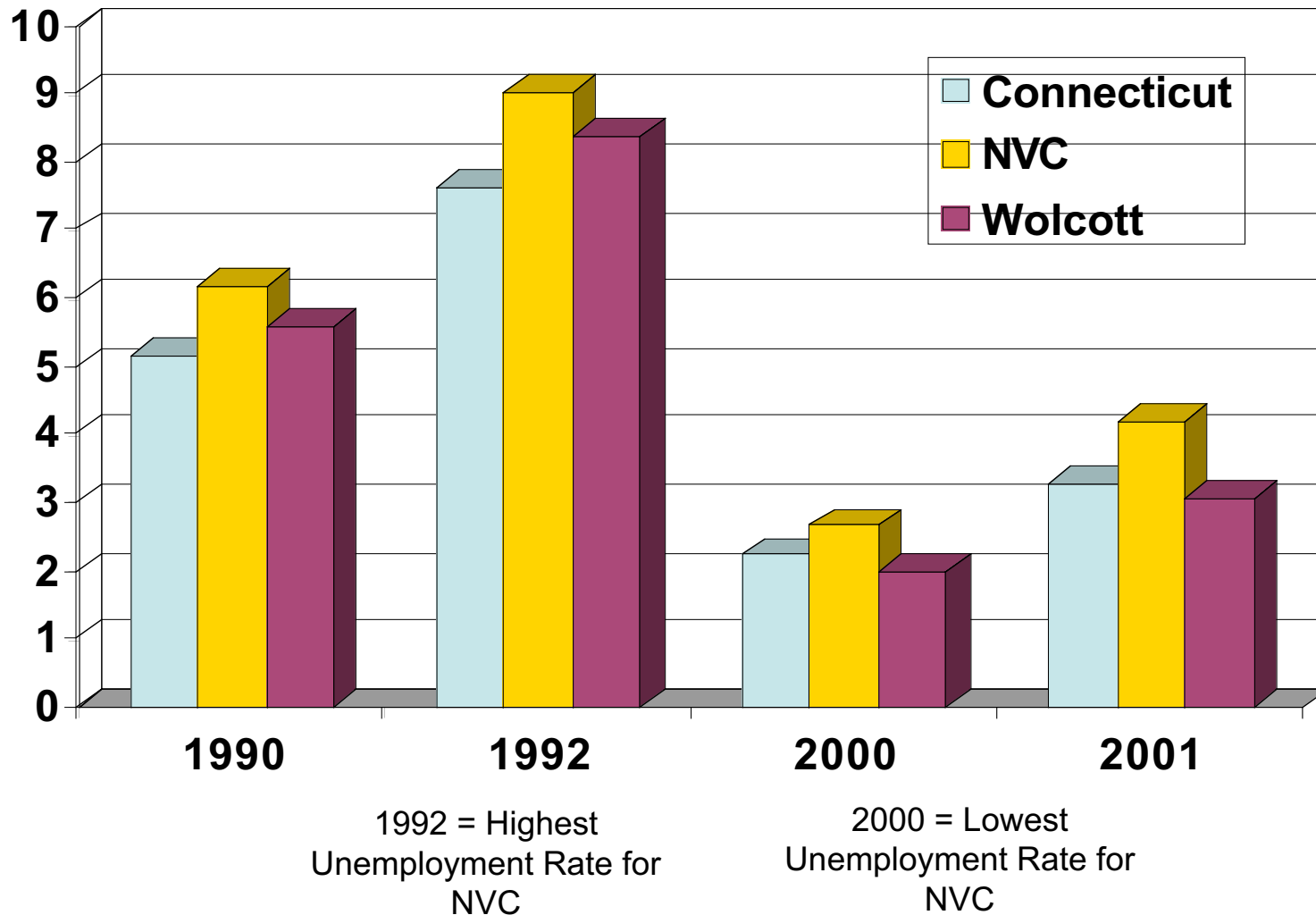
Wolcott's ranking for median household income among NVC towns decreased from 1989 to 1999. Wolcott ranked 6<sup>th</sup> out of the 17 NVC towns for median household income in 1989 whereas it ranked 9<sup>th</sup> for this category in 1999.

---

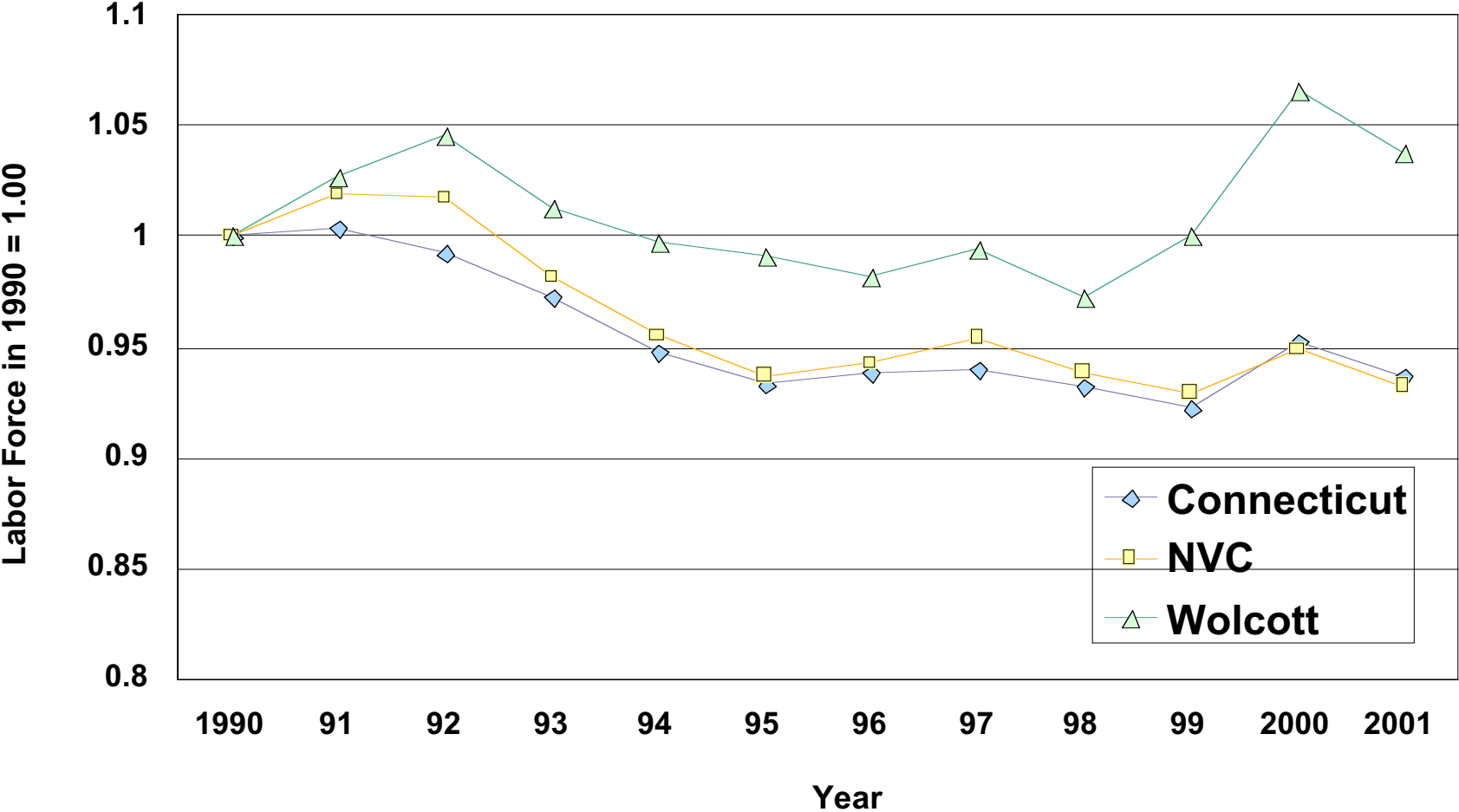
<sup>1</sup> The median household income for the NVC is unavailable. "The median calculations for the NVC could only be calculated by the Census Bureau because the calculation would need every household's income in the NVC for this calculation." We decided against calculating the average incomes for the households in the NVC because these incomes would be badly skewed in some of the smaller towns.



# Unemployment Rates For Connecticut, NVC, and Wolcott, Selected Years



# Indexed Growth of Labor Force for Connecticut, NVC, and Wolcott, 1990-2001



Source: Connecticut Department of Labor

## **Unemployment and Labor Force Characteristics in Wolcott**

In 2001, the unemployment rate was 3.09 in Wolcott, 4.21 in the NVC, and 3.28 in Connecticut. In that year, Wolcott possessed the seventh lowest unemployment rate among NVC towns. Waterbury had the highest unemployment rate (6.02) whereas Cheshire possessed the lowest unemployment rate (2.19).

In 2001, Wolcott possessed 4.8 percent of the labor force in the NVC. Its total labor force of 8,576 was the fifth largest in the NVC in 2001. Waterbury maintained the highest share of the NVC's labor force at 29 percent whereas Bethlehem only possessed 1.1 percent of the NVC's labor force in 2001.

Wolcott maintained 3.6 percent of the unemployed labor force in the NVC in 2001. Wolcott had the ninth highest share of the NVC's total number of unemployed in 2001. Waterbury possessed the largest share of unemployed (41%) whereas Bethlehem possessed the smallest share (.64%) of the NVC's unemployed in 2001.

### **Changes in Labor Force and Unemployment Rates Over Time**

Wolcott's labor force increased by 3.8 percent from 1990 to 2001 whereas the labor force in the NVC and the state decreased by 6.7 percent and 6.3 percent, respectively. In 1990, Wolcott's labor force was 8,263 whereas it was 8,576 in 2001. In total, Wolcott gained 313 workers from 1990 to 2001.

From 1990 to 2001, Wolcott's unemployment rate was highest in 1992 when it reached 8.40. The highest unemployment rates for the NVC and the state over the last 11 years were 9.03 for the NVC and 7.63 for Connecticut. These high unemployment rates also occurred in 1992. Wolcott's low for unemployment rate was 1.99 in 2000. The lows for the NVC and the state were 2.68 and 2.25, respectively. These low unemployment rates also took place in 2000.

Wolcott's unemployment rate increased by 2.79 percentage points from 1990 to 1992. The unemployment rates grew by 2.82 percentage points in the NVC and 2.47 percentage points in the state from 1990 to 1992. Wolcott's unemployment rate decreased by 6.41 percentage points from 1992 to 2000. The unemployment rates decreased by 6.35 percentage points in the NVC and 5.37 percentage points in the state from 1992 to 2000. Wolcott's unemployment rate declined by 2.53 percentage points from 1990 to 2001. The unemployment rates decreased by 1.99 percentage points in the NVC and 1.87 percentage points in the state from 1990 to 2001.

Wolcott's unemployment rate increased at the ninth fastest pace among NVC towns from 1990 to 1992. In the same period, the unemployment rate increased at the fastest pace in Thomaston whereas it grew at the slowest pace in Cheshire. Wolcott's unemployment rate decreased at the sixth fastest pace among NVC towns from 1992 to 2000. During the same period, the unemployment rate decreased at the fastest pace in Waterbury whereas it declined at the slowest pace in Cheshire. Wolcott experienced the largest decrease in unemployment rate among NVC towns from 1990 to 2001. In the same period, the

unemployment decreased at the fastest pace in Wolcott whereas it decreased at the slowest pace in Southbury.

### Housing Stock in Wolcott

In 1997, Wolcott possessed 5,521 housing units. Of the 5,521 homes in Wolcott, 90 percent were single-family homes, 2 percent were two-family homes, 7 percent were three-plus family units, and 1 percent were mobile homes or other. In 1997, of the 142,647 housing units in the NVC, 62 percent were single-family homes, 10 percent were two-family homes, 26 percent were three-plus family units, and 2 percent were mobile homes or other. In addition, of the 1,374,566 housing units in Connecticut, 63 percent were single-family homes, 9 percent were two-family homes, 26 percent were three-plus family units, and 2 percent were mobile homes or other.

Housing Stock, 1997					
	Total	Single Family	Two Family	Three or More Family	Mobile Homes or Other
Connecticut	1,374,566	864,655	121,473	358,667	29,771
NVC	142,647	88,716	14,102	36,983	2,846
Ansonia	7,705	3,582	2,268	1,775	80
Beacon Falls	2,143	1,514	134	314	181
Bethlehem	1,356	1,208	65	48	35
Cheshire	9,379	8,035	202	1,042	100
Derby	5,398	2,574	1,170	1,536	118
Middlebury	2,493	2,366	54	56	17
Naugatuck	12,395	7,295	1,538	3,081	481
Oxford	3,282	3,166	69	20	27
Prospect	2,908	2,658	48	20	182
Seymour	6,206	4,173	680	1,301	52
Shelton	14,135	10,957	958	1,701	519
Southbury	7,353	6,017	353	804	179
Thomaston	2,907	1,994	291	549	73
Waterbury	47,649	18,984	5,295	22,721	649
Watertown	8,074	6,304	737	976	57
Wolcott	5,521	4,986	95	405	35
Woodbury	3,743	2,903	145	634	61

Source: CT Dept. of Economic and Community Development

Share of Housing Stock, 1997				
Town	Single Family	Two Family	Three or more Family	Mobile Homes or other
Connecticut	63%	9%	26%	2%
NVC	62%	10%	26%	2%
Ansonia	46%	29%	23%	1%
Beacon Falls	71%	6%	15%	8%
Bethlehem	89%	5%	4%	3%
Cheshire	86%	2%	11%	1%
Derby	48%	22%	28%	2%
Middlebury	95%	2%	2%	1%
Naugatuck	59%	12%	25%	4%
Oxford	96%	2%	1%	1%
Prospect	91%	2%	1%	6%
Seymour	67%	11%	21%	1%
Shelton	78%	7%	12%	4%
Southbury	82%	5%	11%	2%
Thomaston	69%	10%	19%	3%
Waterbury	40%	11%	48%	1%
Watertown	78%	9%	12%	1%
Wolcott	90%	2%	7%	1%
Woodbury	78%	4%	17%	2%

In 2000, Wolcott possessed 5,697 housing units. Of the 5,697 homes in Wolcott, 91 percent were single-family homes, 2 percent were two-family homes, 7 percent were three-plus family units, and 1 percent were mobile homes or other. In 2000, of the 145,617 housing units in the NVC, 63 percent were single-family homes, 10 percent were two-family homes, 25 percent were three-plus family units, and 2 percent were mobile homes or other. In addition, of the 1,399,819 housing units in Connecticut, 78 percent were single-family homes, 7 percent were two-family homes, 12 percent were three-plus family units, and 4 percent were mobile homes or other.

Housing Stock, 2000					
Town	Total	Single Family	Two Family	Three or more Family	Mobile Homes or Other
Connecticut	1,399,819	889,770	121,349	361,897	30,964
NVC	145,617	91,991	14,083	36,858	2,969
Ansonia	7,799	3,674	2,272	1,780	85
Beacon Falls	2,264	1,635	134	314	183
Bethlehem	1,410	1,260	67	48	35
Cheshire	9,638	8,262	202	1,078	103
Derby	5,496	2,676	1,170	1,536	118
Middlebury	2,578	2,454	54	56	19
Naugatuck	12,551	7,472	1,534	3,071	482
Oxford	3,536	3,422	69	20	31
Prospect	3,085	2,836	48	20	186
Seymour	6,340	4,310	686	1,301	52
Shelton	14,643	11,442	960	1,728	529
Southbury	7,792	6,456	353	804	180
Thomaston	3,072	2,160	291	549	73
Waterbury	47,536	19,191	5,267	22,538	732
Watertown	8,276	6,511	736	976	61
Wolcott	5,697	5,166	95	405	38
Woodbury	3,904	3,064	145	634	62

Source: CT Dept. of Economic and Community Development

Share of Housing Stock, 2000				
Town	Single Family	Two Family	Three or more Family	Mobile Homes or other
Connecticut	64%	9%	26%	2%
NVC	63%	10%	25%	2%
Ansonia	47%	29%	23%	1%
Beacon Falls	72%	6%	14%	8%
Bethlehem	89%	5%	3%	2%
Cheshire	86%	2%	11%	1%
Derby	49%	21%	28%	2%
Middlebury	95%	2%	2%	1%
Naugatuck	60%	12%	24%	4%
Oxford	97%	2%	1%	1%
Prospect	92%	2%	1%	6%
Seymour	68%	11%	21%	1%
Shelton	78%	7%	12%	4%
Southbury	83%	5%	10%	2%
Thomaston	70%	9%	18%	2%
Waterbury	40%	11%	47%	2%
Watertown	79%	9%	12%	1%
Wolcott	91%	2%	7%	1%
Woodbury	78%	4%	16%	2%

Change in Housing Stock, 1997-2000				
Town	Single Family	Two Family	Three or more Family	Mobile Homes or Other
Connecticut	0.7%	-0.2%	-0.2%	0.0%
NVC	1.0%	-0.2%	-0.6%	0.0%
Ansonia	0.6%	-0.3%	-0.2%	0.1%
Beacon Falls	1.6%	-0.3%	-0.8%	-0.4%
Bethlehem	0.3%	0.0%	-0.1%	-0.1%
Cheshire	0.1%	-0.1%	0.1%	0.0%
Derby	1.0%	-0.4%	-0.5%	0.0%
Middlebury	0.3%	-0.1%	-0.1%	0.1%
Naugatuck	0.7%	-0.2%	-0.4%	0.0%
Oxford	0.3%	-0.2%	0.0%	0.1%
Prospect	0.5%	-0.1%	0.0%	-0.2%
Seymour	0.7%	-0.1%	-0.4%	0.0%
Shelton	0.6%	-0.2%	-0.2%	-0.1%
Southbury	1.0%	-0.3%	-0.6%	-0.1%
Thomaston	1.7%	-0.5%	-1.0%	-0.1%
Waterbury	0.5%	0.0%	-0.3%	0.2%
Watertown	0.6%	-0.2%	-0.3%	0.0%
Wolcott	0.4%	-0.1%	-0.2%	0.0%
Woodbury	0.9%	-0.2%	-0.7%	0.0%

From 1997 to 2000, the total number of housing units increased by 176 in Wolcott but increased by 2,970 in the NVC and by 25,253 in Connecticut.

Change in Housing Stock, 1997 to 2000					
Town	Total	Single Family	Two Family	Three or more Family	Mobile Homes or other
Connecticut	25,253	25,115	-124	3,230	1,193
NVC	2,970	3,275	-19	-125	123
Ansonia	94	92	4	5	5
Beacon Falls	121	121	0	0	2
Bethlehem	54	52	2	0	0
Cheshire	259	227	0	36	3
Derby	98	102	0	0	0
Middlebury	85	88	0	0	2
Naugatuck	156	177	-4	-10	1
Oxford	254	256	0	0	4
Prospect	177	178	0	0	4
Seymour	134	137	6	0	0
Shelton	508	485	2	27	10
Southbury	439	439	0	0	1
Thomaston	165	166	0	0	0
Waterbury	-113	207	-28	-183	83
Watertown	202	207	-1	0	4
Wolcott	176	180	0	0	3
Woodbury	161	161	0	0	1
Source: CT Dept. of Community and Economic Development					



## New Housing Permits in Wolcott

In 1997, Wolcott issued 132 new housing permits whereas in 2000 it authorized 64 new housing permits. In 1997, Wolcott ranked 3<sup>rd</sup> among NVC towns for the number of new housing permits. In 2000, it ranked 7<sup>th</sup> among NVC towns for the number of new housing permits.

New Permits Ranking, 1997 and 2000				
Town	New Permits, 1997		New Permits, 2000	
	Count	Rank	Count	Rank
Connecticut	9,349		9,311	
NVC	1,159		1,028	
Ansonia	16	16	38	15
Beacon Falls	25	15	48	10
Bethlehem	8	17	20	17
Cheshire	178	1	68	5
Derby	33	13	46	12
Middlebury	26	14	34	16
Naugatuck	44	10	68	5
Oxford	59	8	85	3
Prospect	55	9	47	11
Seymour	66	6	41	14
Shelton	168	2	121	1
Southbury	93	5	81	4
Thomaston	34	12	51	9
Waterbury	43	11	114	2
Watertown	114	4	59	8
Wolcott	132	3	64	7
Woodbury	65	7	43	13

## Average Price of a House in Wolcott

In 2000, the median price of all residential house sales in Wolcott was \$138,125.

House Sales for Latest Year Available								
	Date of House Sales	Median Price of All Residential House Sales	Total Residential Sales	Less than \$100,000	Between \$100,000 and \$200,000	Between \$200,000 and \$300,000	Between \$300,000 and \$400,000	More than \$400,000
Ansonia	2000	\$128,250	251	51	184	16	0	0
Beacon Falls	2000	\$151,500	96	32	42	22	0	0
Bethlehem	1999	\$170,000	55	6	31	18	0	0
Cheshire	1999	\$170,625	503	43	223	145	64	28
Derby	2000	\$123,000	188	45	118	25	0	0
Middlebury	2000	\$217,500	104	4	43	36	13	8
Naugatuck	2000	\$118,500	466	155	293	18	0	0
Oxford	2000	\$230,000	134	6	43	61	21	3
Prospect	2000	\$180,000	144	10	74	50	10	0
Seymour	2000	\$140,000	212	48	124	30	10	0
Shelton	2000	\$205,000	765	89	280	235	97	64
Southbury	2000	\$185,000	546	103	188	109	79	67
Thomaston	1999	\$110,000	151	51	92	8	0	0
Waterbury	2000	\$87,000	1,315	882	421	12	0	0
Watertown	1999	\$123,825	319	58	208	49	4	0
Wolcott	2000	\$138,125	202	26	135	34	2	5
Woodbury	1999	\$176,000	194	61	43	55	25	10

Source: CT OPM

## Distribution of House Sales in Wolcott

In 2000, 13 percent of the houses sold in Wolcott cost less than \$100,000, 67 percent cost between \$100,000 and \$200,000, 17 percent cost between \$200,000 and \$300,000 and 3 percent cost more than \$300,000.

Distribution of House Sales for Latest Year Available						
Town	Date of House Sales	Less than \$100,000	Between \$100,000 and \$200,000	Between \$200,000 and \$300,000	Between \$300,000 and \$400,000	More than \$400,000
Ansonia	2000	20%	73%	6%	0%	0%
Beacon Falls	2000	33%	44%	23%	0%	0%
Bethlehem	1999	11%	56%	33%	0%	0%
Cheshire	1999	9%	44%	29%	13%	6%
Derby	2000	24%	63%	13%	0%	0%
Middlebury	2000	4%	41%	35%	13%	8%
Naugatuck	2000	33%	63%	4%	0%	0%
Oxford	2000	4%	32%	46%	16%	2%
Prospect	2000	7%	51%	35%	7%	0%
Seymour	2000	23%	58%	14%	5%	0%
Shelton	2000	12%	37%	31%	13%	8%
Southbury	2000	19%	34%	20%	14%	12%
Thomaston	1999	34%	61%	5%	0%	0%
Waterbury	2000	67%	32%	1%	0%	0%
Watertown	1999	18%	65%	15%	1%	0%
Wolcott	2000	13%	67%	17%	1%	2%
Woodbury	1999	31%	22%	28%	13%	5%

## Grand List in Wolcott

Wolcott's gross grand list exceeded \$724 million in 2000. Wolcott's gross grand list was 7<sup>th</sup> highest among the 17 NVC towns in 2000.

Wolcott's equalized grand list exceeded \$1 billion in 2000 whereas the NVC's equalized grand list was nearly \$24 billion and the state's equalized grand list was more than \$296 billion in 2000.

Wolcott possessed the 7<sup>th</sup> highest equalized grand list of the 17 towns in the NVC in 2000.

Wolcott's equalized net grand list was \$1.2 billion in 2000.<sup>2</sup> The NVC's equalized new grand list was more than \$28 billion whereas the state's equalized net grand list was more than \$360 billion in 2000.

Wolcott possessed the 7<sup>th</sup> highest equalized net grand list of the 17 towns in the NVC in 2000.

Wolcott's equalized grand list per capita was \$66,159 in 2000. The NVC's equalized grand list per capita was \$67,151 whereas the state's equalized grand list per capita was \$87,799 in 2000. Wolcott possessed the 12<sup>th</sup> highest equalized grand list per capita of the 17 towns in the NVC in 2000.

Wolcott's equalized net grand list per capita was \$78,896 in 2000. The NVC's equalized net grand list per capita was \$78,914 whereas the state's equalized net grand list per capita was \$105,799 in 2000. Wolcott possessed the 12<sup>th</sup> highest equalized net grand list per capita of the 17 towns in the NVC in 2000.

	Population	Per Capita				
		Equalized Grand List	Equalized Net Grand List	Net Grand List	Actual Grand List	Gross Grand List
<b>Connecticut</b>	<b>3,405,565</b>	<b>\$87,052</b>	<b>\$105,799</b>	<b>\$56,696</b>	<b>\$56,949</b>	<b>\$60,974</b>
<b>NVC</b>	<b>357,094</b>	<b>\$67,151</b>	<b>\$78,914</b>	<b>\$40,635</b>	<b>\$39,894</b>	<b>\$44,226</b>
Ansonia	18,554	\$46,877	\$54,089	\$32,244	\$32,714	\$33,838
Beacon Falls	5,246	\$68,504	\$84,791	\$43,373	\$43,047	\$46,789
Bethlehem	3,422	\$92,325	\$111,637	\$72,158	\$64,020	\$66,606
Cheshire	28,543	\$86,363	\$106,085	\$60,352	\$61,339	\$63,510
Derby	12,391	\$54,054	\$59,644	\$37,501	\$37,609	\$42,118
Middlebury	6,451	\$129,632	\$141,671	\$74,952	\$76,218	\$80,645
Naugatuck	30,989	\$51,830	\$54,345	\$20,472	\$19,156	\$38,201
Oxford	9,821	\$89,621	\$96,109	\$48,904	\$51,191	\$67,449
Prospect	8,707	\$73,812	\$80,240	\$44,217	\$45,297	\$56,371
Seymour	15,454	\$63,862	\$77,517	\$42,265	\$41,959	\$44,949
Shelton	38,101	\$103,176	\$123,917	\$61,892	\$63,318	\$66,331
Southbury	18,567	\$123,531	\$149,083	\$77,906	\$77,906	\$79,643
Thomaston	7,503	\$68,006	\$82,361	\$52,811	\$47,020	\$51,983
Waterbury	107,271	\$38,606	\$44,368	\$15,949	\$15,382	\$16,644
Watertown	21,661	\$74,503	\$87,898	\$59,913	\$52,318	\$56,094
Wolcott	15,215	\$66,159	\$78,896	\$45,039	\$45,366	\$47,634
Woodbury	9,198	\$92,448	\$127,503	\$78,188	\$71,860	\$74,341
<b>Ranking Per Capita Basis, 2000</b>						

<sup>2</sup> The net grand list is net of nontaxable properties such as churches and schools. The Connecticut Office of Policy and Management (OPM) equalizes grand lists by providing an estimate for a grand list value for all 169 towns in Connecticut. It takes into account each town's revaluation date and information on real estate sales to estimate the current year grand list. This figure differs from the real grand list value, which is the sum of all types of grand list except for vehicles and personal property.

Measures of Grand List, 2000			
Region	Equalized Grand List	Equalized Net Grand List	Gross Grand List
<b>Connecticut</b>	<b>\$296,460,380,316</b>	<b>\$360,306,777,800</b>	<b>\$207,650,055,212</b>
<b>NVC</b>	<b>\$23,979,179,800</b>	<b>\$28,179,854,363</b>	<b>\$15,792,838,436</b>
Ansonia	\$869,752,600	\$1,003,575,399	\$627,836,155
Beacon Falls	\$359,373,300	\$444,814,961	\$245,455,000
Bethlehem	\$315,935,700	\$382,020,291	\$227,927,146
Cheshire	\$2,465,059,000	\$3,027,995,269	\$1,812,758,141
Derby	\$669,782,900	\$739,051,420	\$521,887,751
Middlebury	\$836,257,700	\$913,922,661	\$520,239,757
Naugatuck	\$1,606,174,000	\$1,684,096,357	\$1,183,810,720
Oxford	\$880,164,700	\$943,883,283	\$662,412,110
Prospect	\$642,678,000	\$698,649,980	\$490,822,966
Seymour	\$986,927,300	\$1,197,949,985	\$694,637,808
Shelton	\$3,931,122,000	\$4,721,380,531	\$2,527,289,860
Southbury	\$2,293,609,000	\$2,768,025,898	\$1,478,727,168
Thomaston	\$510,246,800	\$617,955,940	\$390,031,053
Waterbury	\$4,141,340,000	\$4,759,379,739	\$1,785,423,001
Watertown	\$1,613,814,000	\$1,903,968,963	\$1,215,042,988
Wolcott	\$1,006,604,000	\$1,200,409,250	\$724,748,952
Woodbury	\$850,338,800	\$1,172,774,436	\$683,787,860

Source: CT Office of Personal Management

Wolcott's residential grand list constituted 70 percent of the gross grand list; the commercial grand list accounted for 5 percent of the gross grand list; the industrial grand list comprised 3 percent of the gross grand list; public utilities' grand list made up 0 percent of the gross grand list; apartments constituted 0 percent of the gross grand list; vehicles made up 13 percent of the gross grand list; and personal property accounted for 4 percent of Wolcott's gross grand list.

The residential grand list constituted 63 percent of the NVC's total gross grand list; the commercial grand list accounted for 9 percent of the gross grand list; the industrial grand list comprised 4 percent the gross grand list; public utilities' grand list made up 0 percent of the gross grand list; apartments constituted 2 percent of the grand list; vehicles made up 11 percent of the gross grand list; and personal property accounted for 9 percent of NVC's gross grand list.

The residential grand list constituted 64 percent of the Connecticut's gross grand list; the commercial grand list accounted for 12 percent of the gross grand list; the industrial grand list comprised 3 percent the gross grand list; public utilities' grand list made up 1 percent of the gross grand list; apartments constituted 2 percent of the grand list; vehicles made up 9 percent of the gross grand list; and personal property accounted for 8 percent of Connecticut's gross grand list.

Component Shares of Grand List by Type, 2000										
Region	Residential Grand List	Commercial Grand List	Industrial Grand List	Public Utility Grand List	Other Grand List	Total Real Grand List	Apartments Grand List	Other Grand List	Vehicle Grand List	Personal Property Grand List
Connecticut	64%	12%	3%	1%	2%	83%	2%	2%	9%	8%
NVC	63%	9%	4%	0%	2%	80%	2%	2%	11%	9%
Ansonia	68%	8%	3%	0%	1%	81%	2%	1%	12%	7%
Beacon Falls	67%	4%	7%	0%	3%	81%	0%	3%	12%	7%
Bethlehem	80%	3%	1%	0%	3%	87%	0%	3%	11%	2%
Cheshire	68%	7%	7%	0%	1%	84%	1%	1%	10%	6%
Derby	66%	11%	2%	0%	2%	83%	2%	2%	10%	7%
Middlebury	66%	6%	8%	0%	2%	83%	0%	2%	10%	7%
Naugatuck	65%	7%	4%	1%	1%	81%	2%	1%	11%	9%
Oxford	79%	3%	3%	0%	2%	87%	0%	2%	10%	4%
Prospect	76%	5%	2%	0%	1%	84%	0%	1%	12%	4%
Seymour	68%	6%	4%	0%	3%	81%	1%	3%	11%	8%
Shelton	60%	12%	4%	1%	1%	79%	1%	1%	9%	12%
Southbury	64%	14%	1%	0%	1%	82%	2%	1%	8%	10%
Thomaston	57%	7%	6%	0%	3%	74%	1%	3%	11%	15%
Waterbury	36%	17%	6%	0%	1%	65%	5%	1%	16%	19%
Watertown	62%	8%	4%	0%	3%	78%	1%	3%	11%	11%
Wolcott	70%	5%	3%	0%	4%	83%	0%	4%	13%	4%
Woodbury	75%	8%	1%	0%	2%	88%	2%	2%	10%	2%

### Government Revenue in Wolcott

Wolcott's government collected more than \$34 million in total revenue in 2000. Wolcott's tax revenues of more than \$19 million comprised 57 percent of the city's total revenue. In 2000, Wolcott ranked 14 of 17 in the NVC for tax revenues as a percentage of total revenues. In the NVC, tax revenues accounted for 61 percent of region's entire revenue whereas tax revenues constituted 65 percent of Connecticut's total revenues.

Wolcott's non-tax revenues of more than \$14 million accounted for 43 percent of Wolcott's total revenues in 2000. In the NVC, non-tax revenues accounted for 39 percent of region's entire revenue whereas non-tax revenues constituted 35 percent of Connecticut's total revenues. In 2000, Wolcott ranked 4 of 17 in the NVC for non-tax revenues as a percentage of total revenues.

Wolcott's intergovernmental revenues of \$12.3 million accounted for 36 percent of Wolcott's total revenues in 2000. In the NVC, intergovernmental revenues accounted for 34 percent of region's entire revenue whereas intergovernmental revenues constituted 29 percent of Connecticut's total revenues. In 2000, Wolcott ranked 5 of 17 in the NVC for intergovernmental revenues as a percentage of total revenues.

<b>Town Revenues, 2000</b>				
	<b>Revenues</b>			
	<b>Total</b>	<b>Tax</b>	<b>Non-Tax</b>	<b>Inter-Governmental</b>
<b>Connecticut</b>	<b>\$8,030,264,742</b>	<b>\$5,254,542,226</b>	<b>\$2,775,722,516</b>	<b>\$2,289,631,797</b>
<b>NVC</b>	<b>\$761,193,689</b>	<b>\$466,506,509</b>	<b>\$294,687,180</b>	<b>\$255,402,552</b>
Ansonia	\$39,039,192	\$18,784,800	\$20,254,392	\$17,151,490
Beacon Falls	\$9,568,194	\$5,733,343	\$3,834,851	\$3,436,246
Bethlehem	\$7,088,841	\$5,435,619	\$1,653,222	\$1,327,779
Cheshire	\$68,515,176	\$49,344,640	\$19,170,536	\$15,194,392
Derby	\$24,258,026	\$14,814,060	\$9,443,966	\$8,544,478
Middlebury	\$15,870,650	\$14,877,923	\$992,727	\$337,271
Naugatuck	\$70,094,665	\$33,831,748	\$36,262,917	\$31,812,180
Oxford	\$21,957,692	\$15,026,845	\$6,930,847	\$6,004,552
Prospect	\$15,677,364	\$10,754,583	\$4,922,781	\$4,505,681
Seymour	\$32,798,973	\$18,979,078	\$13,819,895	\$12,464,943
Shelton	\$72,807,501	\$57,714,602	\$15,092,899	\$10,118,835
Southbury	\$36,939,269	\$32,801,355	\$4,137,914	\$1,669,694
Thomaston	\$17,089,163	\$10,464,817	\$6,624,346	\$5,970,611
Waterbury	\$234,171,571	\$116,591,096	\$117,580,475	\$108,873,681
Watertown	\$44,301,125	\$26,923,475	\$17,377,650	\$14,652,359
Wolcott	\$34,165,480	\$19,450,883	\$14,714,597	\$12,282,574
Woodbury	\$16,850,807	\$14,977,642	\$1,873,165	\$1,055,786
Source: CT Office of Personal Management				

<b>Component Shares of Totals for Revenues, 2000</b>			
	<b>Tax</b>	<b>Non-Tax</b>	<b>Inter-Governmental</b>
<b>Connecticut</b>	<b>65%</b>	<b>35%</b>	<b>29%</b>
<b>NVC</b>	<b>61%</b>	<b>39%</b>	<b>34%</b>
Ansonia	48%	52%	44%
Beacon Falls	60%	40%	36%
Bethlehem	77%	23%	19%
Cheshire	72%	28%	22%
Derby	61%	39%	35%
Middlebury	94%	6%	2%
Naugatuck	48%	52%	45%
Oxford	68%	32%	27%
Prospect	69%	31%	29%
Seymour	58%	42%	38%
Shelton	79%	21%	14%
Southbury	89%	11%	5%
Thomaston	61%	39%	35%
Waterbury	50%	50%	46%
Watertown	61%	39%	33%
Wolcott	57%	43%	36%
Woodbury	89%	11%	6%

Wolcott collects \$2,246 per resident whereas the NVC and Connecticut take in \$2,132 and \$2,358 per person, respectively. Wolcott ranks 5 out of the 17 NVC towns for per capita revenues.

Wolcott collects \$1,278 per resident via taxes whereas the NVC and Connecticut take in \$1,306 and \$1,543 per person through taxes, respectively. Wolcott ranks 9 out of the 17 NVC towns for per capita tax revenues.

Wolcott collects \$967 per resident via non-tax revenues whereas the NVC and Connecticut take in \$825 and \$815 per person through non-tax revenues, respectively. Wolcott ranks 4<sup>th</sup> out of the 17 NVC towns for per capita non-tax revenues.

Wolcott collects \$807 per resident through intergovernmental revenue whereas the NVC and Connecticut take in \$715 and \$672 per person through intergovernmental funds, respectively. Wolcott ranks 4<sup>th</sup> of the 17 NVC towns for per capita intergovernmental revenues.

Per Capita Town Revenues, 2000					
Region	Population	Revenues			
		Total	Tax	Non-Tax	Inter-Governmental
<b>Connecticut</b>	<b>3,405,565</b>	<b>\$2,358</b>	<b>\$1,543</b>	<b>\$815</b>	<b>\$672</b>
<b>NVC</b>	<b>357,094</b>	<b>\$2,132</b>	<b>\$1,306</b>	<b>\$825</b>	<b>\$715</b>
Ansonia	18,554	\$2,104	\$1,012	\$1,092	\$924
Beacon Falls	5,246	\$1,824	\$1,093	\$731	\$655
Bethlehem	3,422	\$2,072	\$1,588	\$483	\$388
Cheshire	28,543	\$2,400	\$1,729	\$672	\$532
Derby	12,391	\$1,958	\$1,196	\$762	\$690
Middlebury	6,451	\$2,460	\$2,306	\$154	\$52
Naugatuck	30,989	\$2,262	\$1,092	\$1,170	\$1,027
Oxford	9,821	\$2,236	\$1,530	\$706	\$611
Prospect	8,707	\$1,801	\$1,235	\$565	\$517
Seymour	15,454	\$2,122	\$1,228	\$894	\$807
Shelton	38,101	\$1,911	\$1,515	\$396	\$266
Southbury	18,567	\$1,990	\$1,767	\$223	\$90
Thomaston	7,503	\$2,278	\$1,395	\$883	\$796
Waterbury	107,271	\$2,183	\$1,087	\$1,096	\$1,015
Watertown	21,661	\$2,045	\$1,243	\$802	\$676
Wolcott	15,215	\$2,246	\$1,278	\$967	\$807
Woodbury	9,198	\$1,832	\$1,628	\$204	\$115



## Governmental Expenditures in Wolcott

Wolcott's government spent approximately \$34 million in 2000. Wolcott's expenditures of more than \$22.9 million on education constituted 67 percent of the city's total expenditures. In the NVC, education expenditures accounted for 56 percent of region's entire expenditures whereas education expenditures constituted 57 percent of Connecticut's total expenditures.

Wolcott's expenditures of more than \$2.1 million on debt service constituted 6 percent of the city's total expenditures. In the NVC, debt service expenditures accounted for 8 percent of region's entire revenue whereas debt service expenditures constituted 8 percent of Connecticut's total expenditures.

Wolcott's expenditures of nearly \$9 million for areas other than education and debt service constituted 26 percent of the city's total expenditures. In the NVC, expenditures for areas other than education and debt service accounted for 36 percent of region's entire revenue whereas expenditures for areas other than education and debt service constituted 35 percent of Connecticut's total expenditures.

Expenditures, 2000					Long Term Debt
	Total	Education	Debt Service	Other	
<b>Connecticut</b>	<b>\$7,684,100,723</b>	<b>\$4,364,819,118</b>	<b>\$603,912,584</b>	<b>\$2,715,369,021</b>	<b>\$4,819,741,870</b>
<b>NVC</b>	<b>\$770,196,193</b>	<b>\$429,917,184</b>	<b>\$62,611,073</b>	<b>\$277,667,936</b>	<b>\$448,313,388</b>
Ansonia	\$38,554,721	\$18,638,450	\$6,244,568	\$13,671,703	\$54,511,054
Beacon Falls	\$10,055,321	\$6,575,602	\$305,774	\$3,173,945	\$14,399,601
Bethlehem	\$6,672,768	\$5,054,792	\$0	\$1,617,976	\$3,619,949
Cheshire	\$67,424,041	\$42,635,086	\$8,629,064	\$16,159,891	\$89,382,334
Derby	\$23,664,031	\$11,619,377	\$2,321,231	\$9,723,423	\$14,672,797
Middlebury	\$15,305,928	\$8,837,754	\$1,585,774	\$4,882,400	\$12,313,417
Naugatuck	\$66,104,312	\$40,316,769	\$4,444,779	\$21,342,764	\$24,685,054
Oxford	\$21,926,750	\$14,066,472	\$1,751,032	\$6,109,246	\$14,916,000
Prospect	\$16,105,715	\$10,720,859	\$1,512,613	\$3,872,243	\$25,887,373
Seymour	\$33,840,887	\$21,919,576	\$3,089,491	\$8,831,820	\$21,625,686
Shelton	\$71,583,648	\$45,108,946	\$4,693,030	\$21,781,672	\$10,430,000
Southbury	\$34,884,976	\$25,242,543	\$61,600	\$9,580,833	\$14,407,290
Thomaston	\$16,144,419	\$9,747,678	\$1,802,745	\$4,593,996	\$12,170,945
Waterbury	\$253,102,939	\$108,102,355	\$19,647,188	\$125,353,396	\$77,783,461
Watertown	\$43,825,616	\$26,940,265	\$4,287,120	\$12,598,231	\$30,331,725
Wolcott	\$34,016,629	\$22,867,038	\$2,180,724	\$8,968,867	\$18,874,751
Woodbury	\$16,983,492	\$11,523,622	\$54,340	\$5,405,530	\$8,301,951

Source: CT Office of Personal Management

Wolcott spends \$2,236 per resident whereas the NVC and Connecticut spend \$2,157 and \$2,256 per person, respectively. Wolcott ranks 4<sup>th</sup> out of the 17 NVC towns for per resident spending.

Wolcott spends \$1,503 per resident for education whereas the NVC and Connecticut spend \$1,204 and \$1,202 per person for education, respectively. Wolcott ranks 1<sup>st</sup> out of the 17 NVC towns for per resident spending on education.

Wolcott spends \$143 per resident for debt service whereas the NVC and Connecticut spend \$175 and \$177 per person for debt service, respectively. Wolcott ranks 12<sup>th</sup> out of the 17 NVC towns for per resident spending on debt service.

Wolcott spends \$589 per resident for areas other than education and debt service whereas the NVC and Connecticut spend \$778 and \$797 per person for areas other than education and debt service, respectively. Wolcott ranks 9 of the 17 NVC towns for per resident spending on items other than education and debt service.

Per Capita Town Expenditures Budgets					
Region	Expenditures				Long Term Debt per Capita
	Total	Education	Debt Service	Other	
Connecticut	\$2,256	\$1,282	\$177	\$797	\$1,415
NVC	\$2,157	\$1,204	\$175	\$778	\$1,255
Ansonia	\$2,078	\$1,005	\$337	\$737	\$2,938
Beacon Falls	\$1,917	\$1,253	\$58	\$605	\$2,745
Bethlehem	\$1,950	\$1,477	\$0	\$473	\$1,058
Cheshire	\$2,362	\$1,494	\$302	\$566	\$3,131
Derby	\$1,910	\$938	\$187	\$785	\$1,184
Middlebury	\$2,373	\$1,370	\$246	\$757	\$1,909
Naugatuck	\$2,133	\$1,301	\$143	\$689	\$797
Oxford	\$2,233	\$1,432	\$178	\$622	\$1,519
Prospect	\$1,850	\$1,231	\$174	\$445	\$2,973
Seymour	\$2,190	\$1,418	\$200	\$571	\$1,399
Shelton	\$1,879	\$1,184	\$123	\$572	\$274
Southbury	\$1,879	\$1,360	\$3	\$516	\$776
Thomaston	\$2,152	\$1,299	\$240	\$612	\$1,622
Waterbury	\$2,359	\$1,008	\$183	\$1,169	\$725
Watertown	\$2,023	\$1,244	\$198	\$582	\$1,400
Wolcott	\$2,236	\$1,503	\$143	\$589	\$1,241
Woodbury	\$1,846	\$1,253	\$6	\$588	\$903

Component Shares of Expenditures, 2000			
	Education	Debt Service	Other
Connecticut	57%	8%	35%
NVC	56%	8%	36%
Ansonia	48%	16%	35%
Beacon Falls	65%	3%	32%
Bethlehem	76%	0%	24%
Cheshire	63%	13%	24%
Derby	49%	10%	41%
Middlebury	58%	10%	32%
Naugatuck	61%	7%	32%
Oxford	64%	8%	28%
Prospect	67%	9%	24%
Seymour	65%	9%	26%
Shelton	63%	7%	30%
Southbury	72%	0%	27%
Thomaston	60%	11%	28%
Waterbury	43%	8%	50%
Watertown	61%	10%	29%
Wolcott	67%	6%	26%
Woodbury	68%	0%	32%

## Occupations in Wolcott

In 1997, 22 percent of Wolcott's 3,564 workers were employed in manufacturing, 22 percent of the 151,104 workers in the NVC were employed in manufacturing, and 17 percent of the 1.8 million workers in Connecticut held jobs in this field. See Chart #1.

In 1997, the percentage of workers employed in finance, real estate, or insurance (FIRE) was 4 percent in Wolcott, 7 percent in the NVC, and 10 percent in the state.

Also in 1997, service jobs accounted for 34 percent of the jobs in Wolcott and 35 percent of the jobs in the NVC and Connecticut.

In 1997, workers in Wolcott also held employment in wholesale and retail trade (17 percent), construction and mining (14 percent), transportation, communications, and utilities (2 percent), and government and public administration (5 percent). NVC employees worked in wholesale and retail trade (19 percent), construction and mining (7 percent), transportation, communications, and utilities (4 percent), government and public administration (6 percent) in 1997. In Connecticut in 1997, workers held employment in wholesale and retail trade (20 percent), construction and mining (6 percent), transportation, communications, and utilities (5 percent), and government and public administration (6 percent).

In 2001, 22 percent of Wolcott's 4,176 employees worked in manufacturing, 20 percent of the 151,387 workers in the NVC were employed in manufacturing, and 15 percent of the 1.76 million workers in Connecticut held jobs in this field. See Chart #2.

In 2001, the percentage of workers employed in finance, real estate, or insurance (FIRE) was 4 percent in Wolcott, 5 percent in the NVC, and 7 percent in the state. Also in 2001, service jobs accounted for 41 percent of the jobs in Wolcott, 37 percent of the jobs in the NVC, and 38 percent of the jobs in Connecticut.

In 2001, workers in Wolcott also held employment in wholesale and retail trade (15 percent), construction and mining (9 percent), transportation, communications, and utilities (4 percent), and government and public administration (5 percent). NVC employees worked in wholesale and retail trade (23 percent), construction and mining (5 percent), transportation, communications, and utilities (3 percent), government and public administration (6 percent) in 2001. In Connecticut in 2001, workers held employment in wholesale and retail trade (22 percent), construction and mining (5 percent), transportation, communications, and utilities (5 percent), and government and public administration (8 percent). See Chart #3.

From 1997 to 2001, Wolcott gained 612 workers from 1997 to 2001 whereas the NVC gained 283 workers and Connecticut lost 42,725 workers. See Chart #4. The percentage of workers in Wolcott increased by 17 percent from 1997 to 2001 whereas the NVC experienced no increase and Connecticut lost 2 percent of its workers during this period. See Chart #5.

From 1997 to 2001, manufacturing jobs increased by 14 percent in Wolcott whereas they decreased by seven percent in the NVC (-2,419 workers) and by 11 percent in Connecticut (-33,801 workers).

The percentage of FIRE workers increased by 5 percent in Wolcott from 1997 to 2001. The percentage of employees in FIRE industries decreased by 30 percent (-3,244) in the NVC from 1997 to 2001 whereas it decreased by 37 percent (-70,010 workers) in Connecticut during this time frame.

In the period from 1997 to 2001, the percentage of employees in service-related positions increased in Wolcott by 40 percent while it increased in the NVC by 7 percent (3,571) and in Connecticut by 4 percent (23,044).

Construction and mining jobs decreased by 24 percent in Wolcott from 1997 to 2001 whereas they decreased by 18 percent in the NVC and by 15 percent in Connecticut during this period. Transportation, communications, and utilities positions increased by 116 percent in Wolcott from 1997 to 2001 whereas they decreased by 17 percent in the NVC and by 6 percent in Connecticut during this period. Wholesale and retail jobs increased by 6 percent in Wolcott from 1997 to 2001 whereas they increased by 20 percent in the NVC and 9 percent in Connecticut during this period. See Chart #6.

### **Business Count**

In 1997, 583 businesses called Wolcott home. See Chart #7. In 1997, agricultural-related businesses constituted 2 percent of the businesses in Wolcott and 2 percent of the businesses in the NVC and the state. Construction and mining made up 26 percent of the businesses in Wolcott, 18 percent of the businesses in the NVC, and 16 percent of the businesses in Connecticut in 1997. In 1997, manufacturing-related businesses constituted 8 percent of the businesses in Wolcott, 7 percent of the businesses in the NVC, and 6 percent of businesses in the state. Transportation, communications, and utility businesses made up 3 percent of the businesses in Wolcott and 3 percent of the businesses in the NVC and Connecticut in 1997. Wholesale and retail trade businesses constituted 23 percent of the businesses in Wolcott, 24 percent of the businesses in the NVC, and 23 percent of the businesses in Connecticut in 1997. FIRE businesses made up 5 percent of the businesses in Wolcott, 7 percent of the businesses in the NVC, and 8 percent of the businesses in Connecticut in 1997. See Chart #8.

In 1997, the service industry comprised 33 percent of the businesses in Wolcott, 39 percent of the businesses in the NVC, and 40 percent of businesses in the state. Government and public administration-related businesses made up 1 percent of the businesses in Wolcott, the NVC, and Connecticut in 1997.

In 2001, 575 businesses called Wolcott home. In 2001, agricultural-related businesses constituted 3 percent of the businesses in Wolcott and 3 percent of the businesses in the NVC and the state. Construction and mining made up 20 percent of the businesses in Wolcott, 15 percent of the businesses in the NVC, and 13 percent of the businesses in Connecticut in 2001. See Chart #9.

In 2001, manufacturing-related businesses constituted 9 percent of the businesses in Wolcott, 7 percent of the businesses in the NVC, and 6 percent of businesses in the state. Transportation, communications, and utility businesses made up 5 percent of the businesses in Wolcott and 3 percent of the businesses in the NVC and Connecticut in 2001. Wholesale and retail trade businesses constituted 24 percent of the businesses in Wolcott, 25 percent of the businesses in the NVC, and 24 percent of the businesses in Connecticut in 2001. FIRE businesses made up 5 percent of the businesses in Wolcott, 7 percent of the businesses in the NVC, and 8 percent of the businesses in Connecticut in 2001.

In 2001, the service industry comprised 33 percent of the businesses in Wolcott, 39 percent of the businesses in the NVC, and 43 percent of businesses in the state. Government and public administration-related businesses made up 1 percent of the businesses in Wolcott, the NVC, and Connecticut in 2001. See Chart #10.

From 1997 to 2001, the total number of businesses increased by 1 percent in the NVC but Connecticut experienced no increases in the number of businesses during this four-year span. In the same period, the total number of businesses decreased by 1 percent in Wolcott.

The percentage of agricultural-related businesses increased by 100 percent in Wolcott but increased by 27 percent in the NVC and 22 percent in Connecticut from 1997 to 2001.

The percentage of construction and mining businesses decreased by 22 percent in Wolcott and decreased by 15 percent in the NVC and 19 percent in Connecticut from 1997 to 2001.

The percentage of manufacturing businesses increased by 11 percent in Wolcott, increased by 1 percent in the NVC, and experienced no gain in Connecticut from 1997 to 2001.

Transportation, communication, and utilities businesses increased by 37 percent in Wolcott and increased by 9 percent in the NVC and 1 percent in Connecticut from 1997 to 2001.

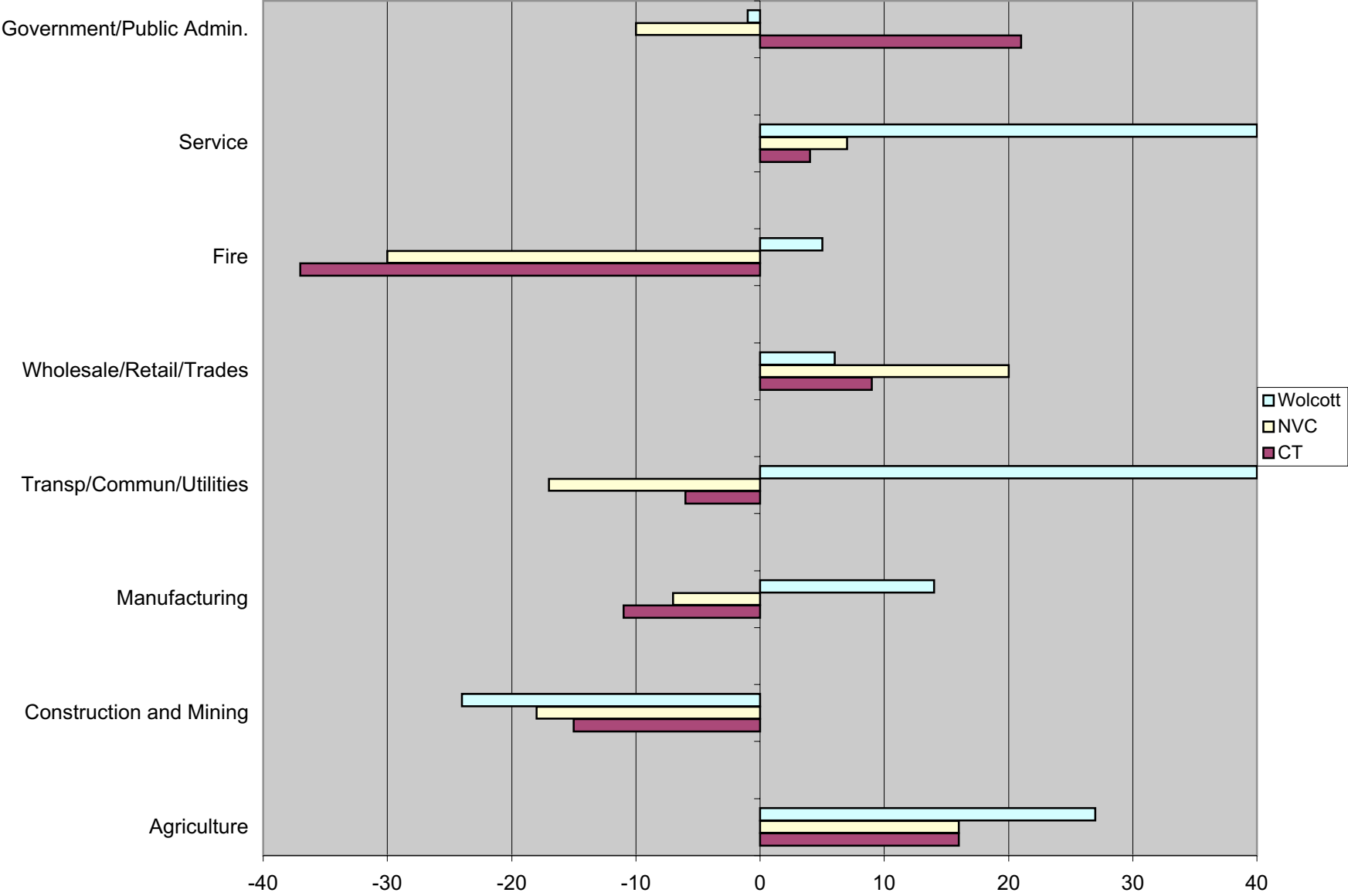
Wholesale and trade-related businesses increased by 3 percent in Wolcott, increased by 6 percent in the NVC, and increased by 2 percent in Connecticut from 1997 to 2001.

The percentage of FIRE businesses increased by 7 percent in Wolcott, rose by 4 percent in the NVC, and decreased by 3 percent in Connecticut from 1997 to 2001.

Service-related businesses decreased by 1 percent in Wolcott, increased by 3 percent in the NVC, and increased by 5 percent in Connecticut from 1997 to 2001. See Chart #11.

Government and public administration-related businesses experienced a decrease of 20 percent increase percent in Wolcott and an increase of 1 percent in the NVC and 2 percent in Connecticut from 1997 to 2001.

# Percent Change in Employment by Industries 1997/2001



Source: Dunn and Bradstreet